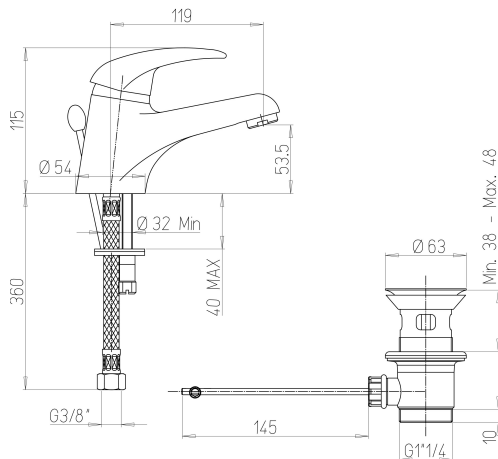


HEALTHCARE TAPWARE

Hospital washbasin mixer with fixed spout and drain - 75023



Benefits of the product

- Fits perfectly in all bathrooms.
- Multifunction ceramic cartridge Ø 40: temperature limit stop with 7 adjustment positions, double flow (hard point at 50% opening).
- Flow between 4 and 6L / min at 3 bar - in accordance with the French norm standard "Medical"; possible flow modification, in case of disassembly of the limiters, by adjusting screw between 4 and 20L / min.
- Water savings, safe operation and controlled water consumption.

Description

Single hole washbasin mixer with ABS handwash basin drain, deck-mount with solid handle. Fixed cast spout L 115mm. Height to nozzle 55mm. Multifunction ceramic cartridge Ø 40: 7-setting temperature limit stop, dual flow (hard point at 50% opening). Flow between 4 and 6L / min at 3 bar - in accordance with the NF standard "medical environment"; possible flow modification, in case of disassembly of the limiters, by adjusting screw between 4 and 20L / min. Tapware fitted as standard star-shaped flow straightener. Body, spout and controls in polished chrome plated brass. SPEX stainless steel braided hoses, M12x1, LN G'3 / 8 L 350mm Basket filter seals mounted on the hoses limiting fouling. Reinforced fixation by a stainless steel rod. 10 year warranty. Sanifirst brand single hole washbasin mixer, fixed cast spout REF: 75023 or approved equivalent.



TECHNICAL DATASHEET

Additional Information

Product reference	75023
Previous reference	FL2200MA
Brand	Sanifirst
Warranty	10 years against manufacturing defects
Special feature 1	Fixed spout
Height to nozzle (mm)	53
Projection (mm)	119
Clip-on spout	No
Drainage	ABS drainage
Flow straightener	Star shaped flow straightener, M24 x 1
Lever	Solid easy maintenance handle
Connection	SPEX hoses 350 mm - M12 X 1 - LN G'3 / 8 with basket filter seals and flow rate limiters
Flow rate	Between 4 et 6 L/min at 3 bar
Minimum pressure	1 bar
Recommended pressure	3 bar
Maximum pressure	5 bar
Cartridge	75312 Ø 40mm, dual flow, flow limiter and temperature limiter
Coating	Nickel > 10 microns - Chrome > 0.3 microns