



HEALTHCARE TAPWARE

Hospital bath shower mixer - 75032

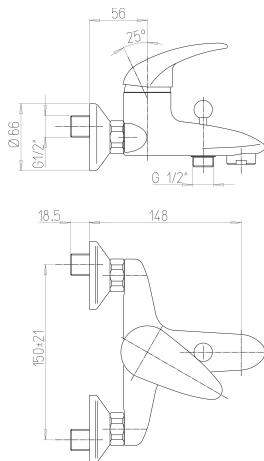


Benefits of the product

- Solid easy maintenance handle
- Multifunction Cartridge: Dual flow and flow settings from 2l to 23.4l/min and temperature stop with 7 settings.
- Star shaped flow straightener: limits the water spray, no water retention.

Description

Bath-shower mixer, 150mm span, no drain, wall-mount with solid handle
Multifunction ceramic cartridge \varnothing 40: 7-setting temperature limit stop, dual flow and flow settings from 2l to 23.4l/min. Equipped with an automatic changeover with low pressure lock. Tapware fitted as standard star-shaped flow straightener. Body, spout and controls in polished chrome plated brass. Shower outlet M G'1 / 2 with integrated back-flow valve. Connection LN G'3 / 4 comes with rosettes and off-centre fittings M G'1/2 10 year warranty. Sanifirst brand bath-shower mixer, 150mm span REF: 75032 or approved equivalent.





TECHNICAL DATASHEET

Additional Information

Product reference	75032
Previous reference	FL2240MA
Brand	Sanifirst
Warranty	10 years against manufacturing defects
Special feature 1	Bath-shower
Clip-on spout	No
Flow straightener	Star shaped flow straightener, M28 x 1
Lever	Solid easy maintenance handle
Connection	LN G'3 / 4 comes with rosettes and off-centre fittings M G'1 / 2 - M G'3 / 4
Minimum pressure	1 bar
Recommended pressure	3 bar
Maximum pressure	5 bar
Max tightening	
Cartridge	75312 Ø 40mm, dual flow, flow limiter and temperature limiter
Coating	Nickel > 10 microns - Chrome > 0.3 microns