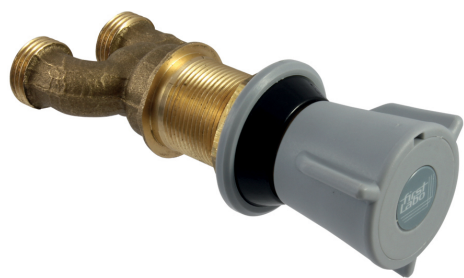




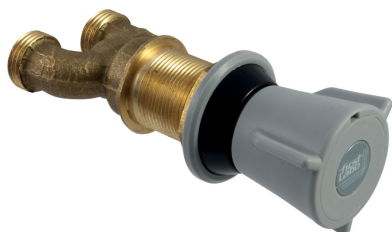
LABORATORY TAPWARE

Panel tap - 76169



Description

Tap on backplate for vacuum. Water tight control valve NF, connection M G'1 / 2, lock nut, projection 55 mm. Polypropylene brace and flanged washer according to colour codes of the European standard NF EN 13792. Maximum tightening 25mm. Brass body with black Nylolac coating (stronger than simple Epoxy finish). 5 year warranty. First Labo brand panel valve REF: 76169 (formerly H9315PT) or approved equivalent.





TECHNICAL DATASHEET

Additional Information

Product reference	76169
Previous reference	H9315PT
Brand	FirstLabo
Warranty	5 years against manufacturing defects
Special feature 1	Remotely controlled tapware/ laboratory fume hood
Special feature 2	Tabletop or backsplash
Special feature 3	With one tap
Base color EN	grey
Base washer color EN	gray
Insert color EN	grey
Knob color EN	grey
Knob plate color EN	grey
Opening mechanism	2.5 turns head
Projection (mm)	55
Connection	M G'1/2
Adjustable flow rate	No
Dual flow rate	No
Minimum pressure	1 bar
Recommended pressure	5 bar
Maximum pressure	7 bar
Blocking temperature	No
Max tightening	25
Packing	1