



LABORATORY DRAINAGE

Single grey sink no overflow 15x30 cm - 77008



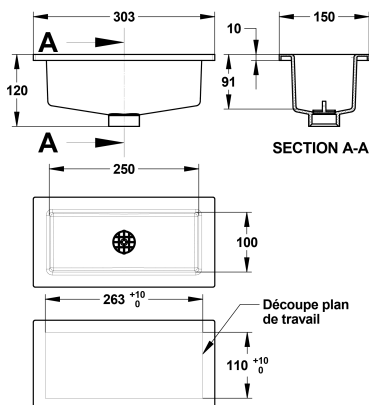
Benefits of the product

- Made from polyethylene
- Exceptional resistance to chemicals
- Very good mechanical resistance
- Very good at high temperatures (60 ° C continuous, 90 ° C intermittently)
- Thickness of the upper walls 8mm
- Comes with a removable grate
- Additional Accessories:

Siphons SS34 40, SV34 40 Prylex 34, connection UC24 40 or elbow connection CC24 40

Description

Single grey polypropylene sink without overflow 150X300mm, centre outlet and S60x6 thread, \varnothing 40mm. Total height with outlet (A): 114mm, total height without outlet (H): 80mm, total length (C): 303mm, total width (D): 152mm, total thickness (E): 10mm. 5-year warranty against manufacturing defects. Saniserap brand single grey sink 150X150mm REF: 77008 (formerly CU3 B) or approved equivalent.





TECHNICAL DATASHEET

Additional Information

Product reference	77008
Previous reference	CU3 G
Brand	Saniserap
Warranty	5 years
Dimension A (mm)	114
Dimension B (mm)	
Dimension C (mm)	303
Dimension D (mm)	152
Dimension E (mm)	10
Dimension H (mm)	80
Inlet diameter	
Lenght (mm)	30
Special feature 1	Simple
Special feature 2	Without overflow
Special feature 3	Central output
Special feature 4	Grey
Packing	1
Connection	Pas d'artillerie Ø 40 mm