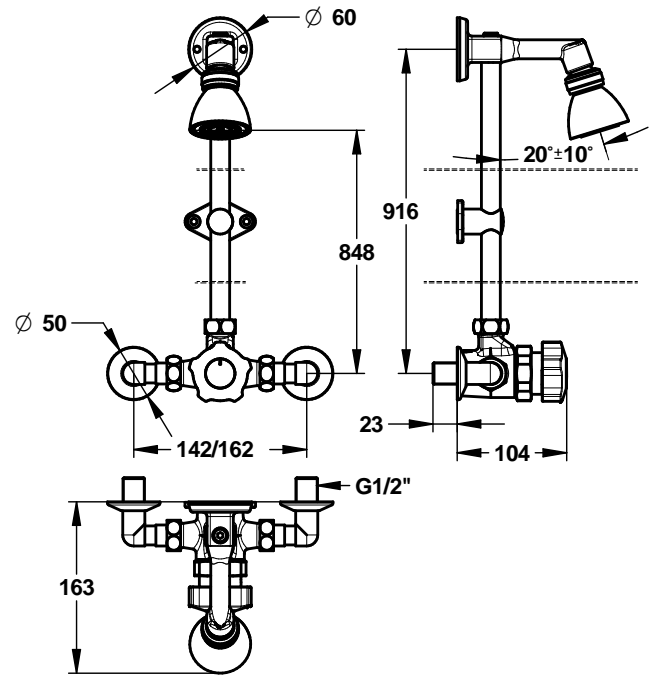


Range: PRESTO ALPA®

Ref: 35815 - Mechanical timed-flow mixer tap for shower, exposed ready-to-install kit



> Working pressure:

- 1 to 5 bar

> Flow:

- 8l/min with integrated flow regulator
- Anti-water-hammering design

> Flow time:

- 30 seconds (-10 / +5 seconds)

> Hydraulic supply:

- Adjustable angled connectors F 3/4" (20x27) x M 1/2" (15x21)
- ALPA mixing tap with NF check valves

> Material and colour finish:

- Chrome-plated brass body
- Black polyacetal knob

> Thermal resistance:

- Resistant to a temperature of 75°C for 30-minute-thermal-shocks

> Security:

- Maximum temperature limitation with adjustable temperature stop

> Delivered with:

- 1 Directional shower head with tube and collar
- 2 Filter gaskets
- 2 Union nuts 3/4" (20x27)
- 2 Angled connector M 3/4" - F 1/2"
- 1 Instruction manual

> Standards & approvals:

- Brass body in accordance with EN 1982, EN 12164, EN 12156
- Molded chrome-plated body in accordance with EN 12540
- 200-hour neutral salt spray resistant (NSS) in accordance with ISO 9227

Ce document n'est pas contractuel ; nous nous réservons le droit de modifier les caractéristiques de nos produits sans préavis. Toutes nos marques et tous modèles sont déposés.

