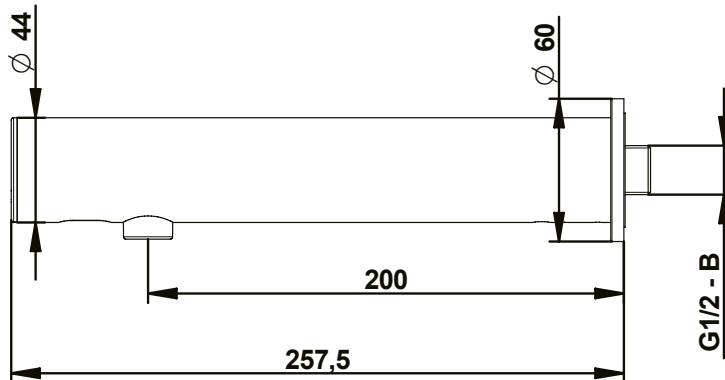
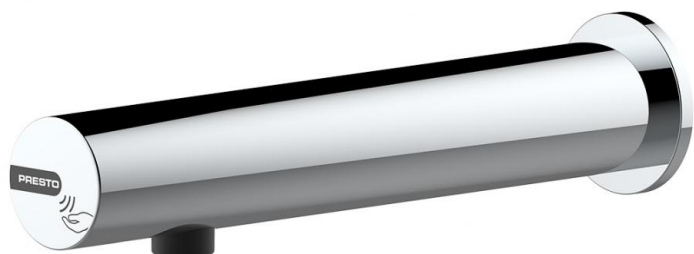


**Range:** PRESTO LINEA®

**Ref:** 57100 - Wall-mounted single sensor tap, all-integrated, battery, 3l/min Chrome



#### > Working pressure

- 1 to 5 bar

#### > Function

- Starts and stops automatically by hand detection
- Sensor trigger suitable for PRM, elderly, children and disabled people

#### > Flow

- 3l/min at 3 bar with integrated regulated anti-limescale aerator

#### > Hydraulic supply

- G 1/2" (15x21) - Cold or premixed water
- Integrated stop valve

#### > Power supply

- Integrated 3V CR123A lithium batteries (x2)

#### > Materials & Finish

- External brass body. Chrome Finish
- Internal lead-free brass body
- Molded metal cover: Chrome Finish

#### > Thermal resistance

- Resistant to a temperature of 75°C for 30-minute-thermal-shocks

#### > Security

- Anti-overflow security time set to 30 seconds preventing the water to flow continuously
- Automatic shutdown of solenoid valve in case of low battery or sensor damage
- Duty flush 30 sec every 24h after last use (adjustable flow time and frequency with PRESTOCOM toolkit: <https://www.presto.fr/apropos/prestocom>)
- Smooth inner body for limiting biofilm binding and bacterial development
- Low battery alert (blinking led light)

#### > Installation

- Recommended installation height : 30 cm above the bottom of the washbasin

#### > Delivered with

- 1 wall rose
- 1 Filter gasket
- 1 Self-adhesive sticker
- 1 Instruction manual

#### > Installation

- Recommended installation height : 30 cm above the bottom of the washbasin

#### > Delivered with

- 1 wall rose
- 1 Filter gasket
- 1 Self-adhesive sticker
- 1 Instruction manual

#### > Standards & approvals

- Lead-free brass in accordance with NF EN1982, EN12164, NF EN 12165, 4MS, RoHS, Reach, NSF-372, UBA list compliant
- Dezincification compliant with ISO 6509 and NDZ
- 200-hour neutral salt spray resistant (NSS) in accordance with NF ISO 9227

