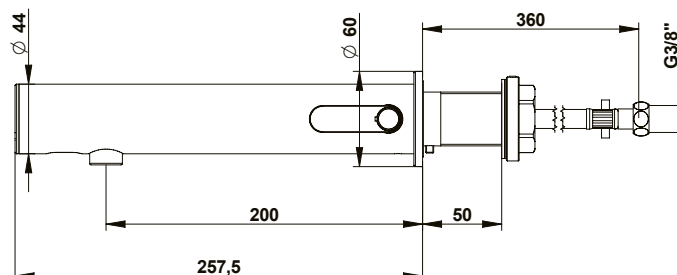
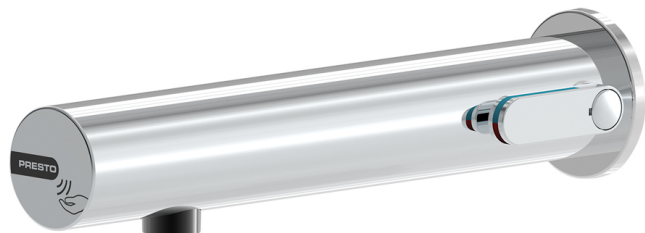


Range: PRESTO LINEA

Ref: 57106 - Wall-mounted sensor mixer, cross-partition, Battery, 3l/min



> Working pressure :

- 1 to 5 bar

> Function:

- Sensor trigger suitable for elderly, children and disabled people

> Flow :

- 3 l/min with integrated flow regulator
- High quality anti-limescale aerator

> Hydraulic supply :

- G 3/8" (12x17) hoses

> Power supply :

- Integrated 6V CR123 lithium battery

> Material and colour finish :

- Chrome-plated brass body with smooth inside body
- Chrome-plated molded metal cover

> Thermal resistance :

- Resistant to a temperature of 75°C for 30-minute-thermal-shocks

> Security :

- Anti-overflow security time set to 30 seconds preventing the water to flow continuously
- Automatic shutdown of solenoid valve in case of low battery or sensor damage
- Duty flush 30 sec every 24h after last use (adjustable flow time and frequency)
- Low battery alert (blinking led light)
- Maximum temperature limitation with adjustable temperature stop

> Installation

- Recommended installation height : 30 cm above the bottom of the washbasin

> Delivered with:

- 1 Brass clamping nut, 1 Gasket and 1 Washer
- 1 Wall rose
- 2 PEX Hoses with revolving nuts, NF check valves and filter gaskets
- 2 M M G 3/8" (12x17) Stop valves
- 1 Self-adhesive sticker
- 1 Instruction manual

> Standards & approvals :

- Brass body in accordance with NF EN1982, EN12164, NF EN 12165,
- UBA list compliant
- 200-hour neutral salt spray resistant (NSS) in accordance with NF ISO 9227

